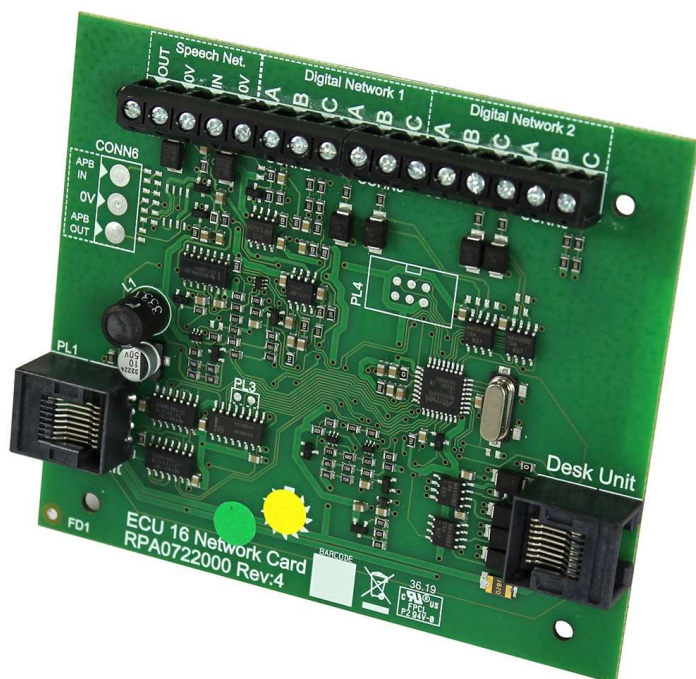


# SigTEL Interface/Network Communication Card

Part No. ECU723



## Overview

- An optional system expansion device.
- Allows an ECU-224 desk controller to be connected to an ECU-4, 8 or 16 SigTEL controller to simplify call handling on larger SigTEL applications.
- Mounts inside an ECU-4, 8 or 16 (can also be used to network the ECU-4, 8 or 16 to another controller if required).
- Not compatible with ECU-8NT controllers.
- See schematic/full instructions for further details.

## More Information

## Technical Specifications

Network connection	The ECU723 transmits speech via a single wiring loop and digital data via two linear RS485 networks. The network should be connected using 4 x 2-core 1.5 mm2 enhanced fire-rated cable. Max. length
Connections	Cat 5 patch lead (supplied) connects the ECU723 to a master controller. The ECU-224 desk controller also connects to the ECU723 via a Cat 5 lead.
Product dimensions (mm)	92 W x 108 H x 20 D mm.
Weight	56g.
Notes	We recommend two separate cable paths be run with each path containing a single speech and single data cable (which should not be mixed in the same cable). Download main ECU-4/8/16 Instructions bel