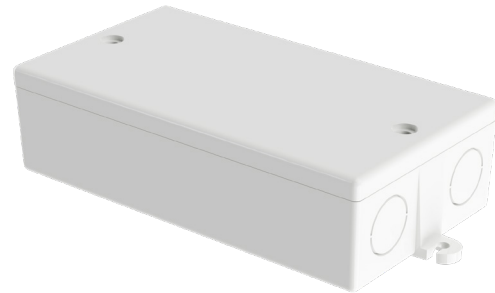


N-IO

Features

- ▶ For use with the FIREscape Nepto system for phase monitoring (or fault monitoring)
- ▶ Rugged design
- ▶ Enclosure features multiple cable entry knock-outs
- ▶ Features 4 inputs and 2 outputs



Description

N-IO is an input and output unit eg. for phase monitoring. The unit has 4 inputs and 2 outputs. A maximum number of 16 units may be connected to a central. The unit reserves an address on the address line. The address may be set and checked with the Neptolux programming device and the N-PROG Cable.

The N-10 inputs can be used for phase monitoring or fault monitoring. The

input may monitor may monitor opening or closing contracts.

N-10 outputs may be used to control eg. traditional luminaries which may be activated by a programmable function. The state of the output is indicated with a green LED (OUT1/OUT2). When the output is activated, the led is illuminated.

Specification

Ordering Code	N-IO
Operating voltage (VDC) (VAC)	20 – 40 VDC
Current consumption from line μ A	2 / 0.1W
Current consumption from line	3.2 mA
Dimensions (housing) (width x length x height) mm	120 x 66 x 32,5 mm
Monitoring resistors	8 pcs / 10 kilo-ohms



For further information visit our website. Hochiki reserves the right to alter the specification of its products from time to time without notice. Although every effort has been made to ensure the accuracy of the information contained in this document it is not warranted or represented by Hochiki to be a complete and up-to-date description. Check online for current version.